

# *High Voltage, General Purpose Transformers*

*2.4 Thru 15 KV Class*



High Voltage  
General Purpose



**ISO 9001:2000  
REGISTERED**

# Specifications

## Three Phase — 150° C Rise — 2.4KV Thru 15KV

### Core & Coil

Wire or strip wound coils on high grade silicon electrical steel cores. Complete assembly isolated from enclosure through vibration dampening pads.

### Insulation

220° C insulation system.

### Enclosure

Indoor ventilated heavy gauge steel enclosure with removable front and rear panels. Arranged for standard floor or platform mounting.

### Finish

Electrostatically applied baked light grey polyurethane powder paint.

### Terminals

Wiring compartments located behind removable covers with fully sized terminals arranged to accept installer's cable connectors. Flexible grounding strap provided between core and coil assembly and enclosure with stud or ground pad for system ground connection.

### Taps

Units provided with full capacity primary taps. (2) @ 2-1/2% FCAN and (2) @ 2-1/2% FCBN.

### Nameplate

Diagrammatic nameplate includes all rating data and provides wiring diagram with connection point identification.

### Standards

ANSI - C57.12  
NEMA ST-20

### Sound Levels

Transformers meet the maximum sound level requirements established by IEEE as follows:

10- 50 KVA	45 db
51- 150 KVA	50 db
151- 300 KVA	55 db
301- 500 KVA	60 db
501- 700 KVA	62 db
701-1000 KVA	64 db
1001-1500 KVA	65 db

High Voltage  
General Purpose



Style A



Style B

# Catalog Number Selection

## Three Phase — 150° C Rise — 2.4 KV, 5 KV, 7.2 KV, 8.6 KV and 15 KV

KVA	Catalog Number**	Dimensions (Inches)			Approx. Weight	Enclosure Style
		H	W	D		
15	GT ( ) S15H	48	36	20	550	A
30	GT ( ) S30H	48	36	20	575	A
45	GT ( ) S45H	48	36	20	600	A
75	GT ( ) S75H	49	39	23	850	A
112	GT ( ) S112H	57	45	26	1225	A
150	GT ( ) S150H	57	45	26	1300	A
225	GT ( ) S225H	59	46.5	30.875	1600	A
300	GT ( ) S300H	65	50	30.875	2100	A
500	GT ( ) S500H	72.75	53.375	36.875	2950	A
750	GT ( ) S750H	90	64	48	4325	B
1000*	GT ( ) S1000H	90	64	48	4520	B
1500*	GT ( ) S1500H	90	72	48	6100	B

KVA	Catalog Number**	Dimensions (Inches)			Approx. Weight (Pounds)	Enclosure Style
		H	W	D		
75	GT ( ) S75H	80	53	48	1925	B
112.5	GT ( ) S112H	80	53	48	1975	B
150	GT ( ) S150H	80	64	48	2350	B
225	GT ( ) S225H	80	64	48	2550	B
300	GT ( ) S300H	80	64	48	3100	B
500	GT ( ) S500H	90	72	48	3900	B
750	GT ( ) S750H	90	72	48	5100	B
1000*	GT ( ) S1000H	90	78	48	5950	B
1500*	GT ( ) S1500H	106.5	86	54	7825	B

**\*\*NOTE:** Insert correct code from Table 1 or Table 2 for required HV and LV voltage combination in the parenthesis to complete catalog number.

\* Dimensions for secondary voltage of 480 volts only. Consult factory for other voltages.

2.4KV Class - 20KV BIL		
Primary	Secondary	Code
2400 Delta	240 Delta	A2
	480 Delta	A3
	208Y/120	A4
	480Y/277	A5
5KV Class - 30KV BIL		
Primary	Secondary	Code
4160 Delta	240 Delta	B2
	480 Delta	B3
	208Y/120	B4
	480Y/277	B5
4800 Delta	240 Delta	C2
	480 Delta	C3
	208Y/120	C4
	480Y/277	C5

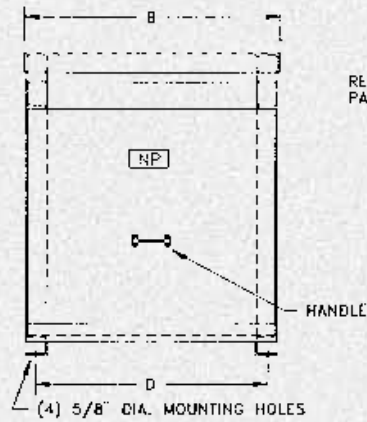
7.2KV Class - 45KV BIL		
Primary	Secondary	Code
7200 Delta	240 Delta	D2
	480 Delta	D3
	208Y/120	D4
	480Y/277	D5
8.6KV Class - 45KV BIL		
Primary	Secondary	Code
8320 Delta	240 Delta	G2
	480 Delta	G3
	208Y/120	G4
	480Y/277	G5
15KV Class - 60KV BIL		
Primary	Secondary	Code
12000 Delta	240 Delta	J2
	480 Delta	J3
	208Y/120	J4
	480Y/277	J5
	240 Delta	K2
12470 Delta	480 Delta	K3
	208Y/120	K4
	480Y/277	K5
13200 Delta	240 Delta	L2
	480 Delta	L3
	208Y/120	L4
	480Y/277	L5
13800 Delta	240 Delta	M2
	480 Delta	M3
	208Y/120	M4
	480Y/277	M5

High Voltage  
General Purpose

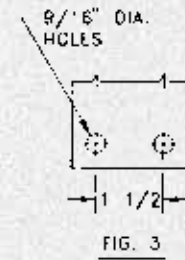
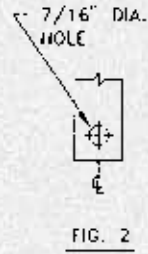
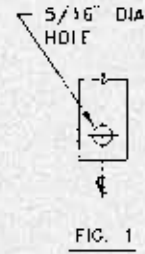
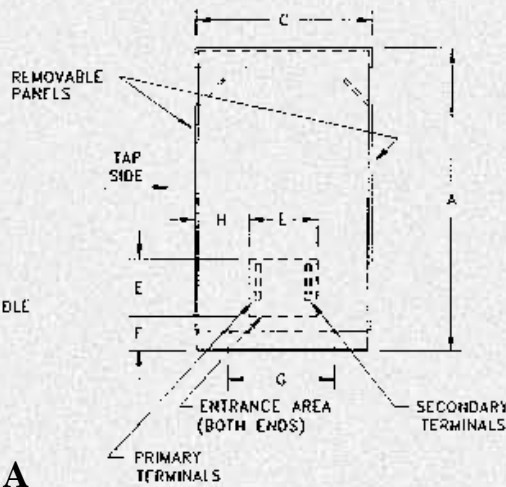
# Dimensional Data

Three Phase — 150° C Rise — 2.4 KV and 5 KV

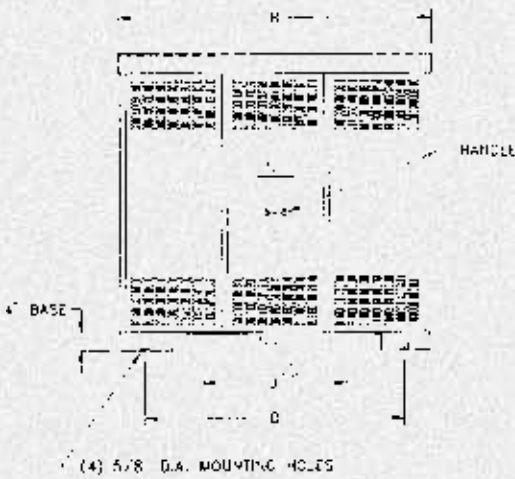
High Voltage  
General Purpose



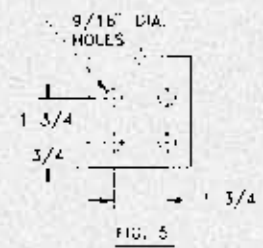
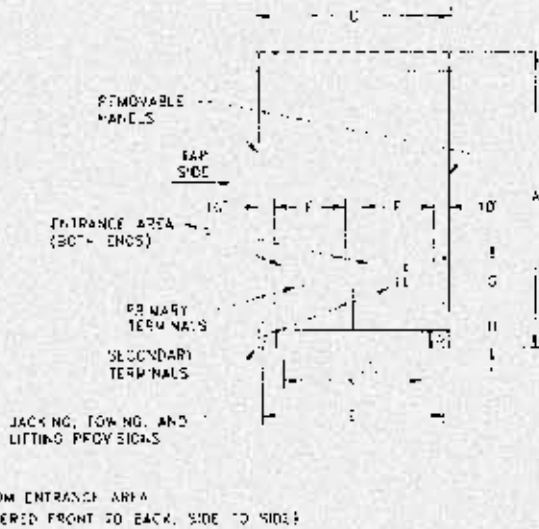
Style A



KVA	Net Wt. in Lbs.	A	B	C	D	E	F	G	H	Terminal Spade	
										Primary	Secondary
15	550	48	36	20	34.125	6	5.75	16.75	7	Fig. 1	Fig. 1
30	575	48	36	20	34.125	6	5.75	16.75	7	Fig. 1	Fig. 1
45	600	48	36	20	34.125	6	5.75	16.75	7	Fig. 1	Fig. 2
75	850	49	39	23	37.125	8	5.75	19.75	7.5	Fig. 1	Fig. 2
112.5	1225	57	45	26	43.125	10	6.75	22.75	8	Fig. 2	Fig. 2
150	1300	57	45	26	43.125	10	6.75	22.75	8	Fig. 2	Fig. 2
225	1600	59	46.5	30.875	43.250	10	6.75	25	10.437	Fig. 2	Fig. 3
300	2100	65	50	30.875	46.75	10	6.75	25	10.437	Fig. 2	Fig. 3
500	2950	72.75	53.375	36.875	49.625	12	7.5	32	12.437	Fig. 2	Fig. 3



Style B



KVA	Net Wt. in Lbs.	A	B	C	D	E	F	G	H	J	K	Terminal Spade	
												Primary	Secondary
750	4325	90	64	48	54	44.5	12.5	12	4.250	30	39	Fig. 4	Fig. 5
1000*	4520	90	64	48	54	44.5	12.5	12	4.250	30	39	Fig. 4	Fig. 5
1500*	6100	90	72	48	62	44.75	12.5	12	4.250	30	39	Fig. 4	Fig. 5

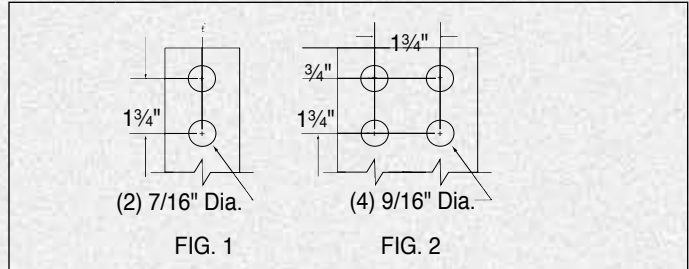
\* Dimensions for secondary voltage of 480 volts only. Consult factory for other voltages.

# Dimensional Data

Three Phase — 150° C Rise — 7.2 KV, 8.6 KV & 15 KV

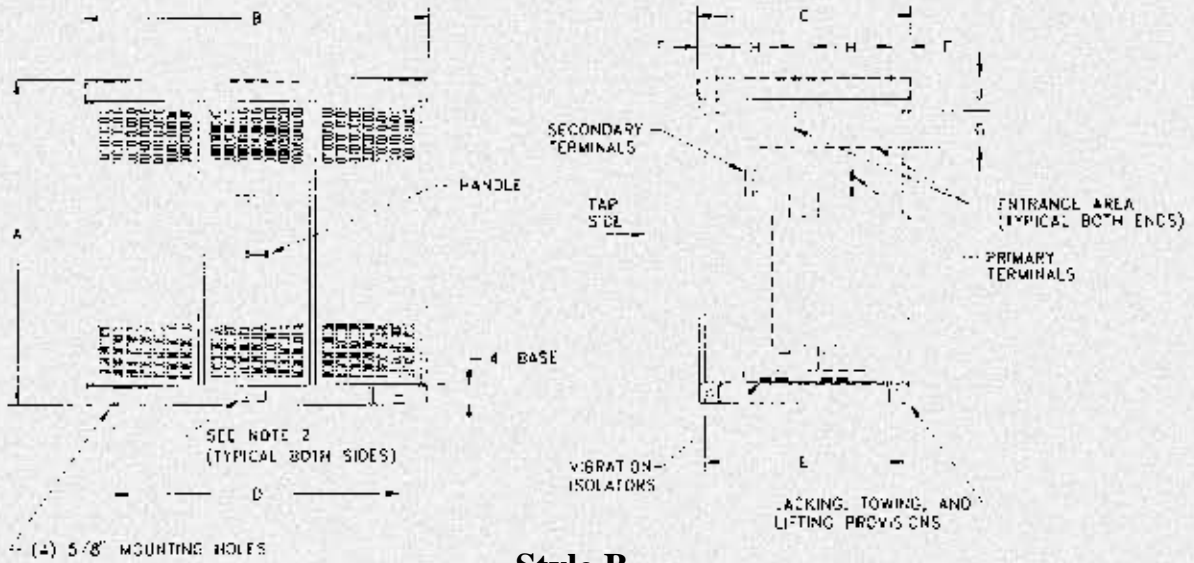
**Notes:**

1. Covers and all panels are removable
2. Grounding block (welded to base)  
(2) 1/2 - 13 tapped holes
3. Lift eyes are a welded integral part of the base



Terminal Material: Tin Plated Aluminum			
Terminal Spade Figure			
KVA	208V	480V	7.2KV, 8.6KV, 15KV
75	1	1	1
112.5	1	1	1
150	1	1	1
225	2	1	1
300	2	1	1
500	2	1	1
750	2	2	1
1000	—	2	1
1500	—	2	1

High Voltage  
General Purpose



**Style B**

KVA	Net Wt. in Lbs.	A	B	C	D	E	F	G	H	J
75	1925	80	53	48	43	44.5	6	8	16.5	4
112.5	1975	80	53	48	43	44.5	6	8	16.5	4
150	2350	80	64	48	54	44.5	6	8	16.5	4
225	2550	80	64	48	54	44.5	6	8	16.5	4
300	3100	80	64	48	54	44.5	6	8	16.5	4
500	3900	90	72	48	62	44.75	6	8	16.5	4
750	5100	90	72	48	62	44.75	6	8	16.5	4
1000*	5950	90	78	48	68	44.75	6	8	16.5	4
1500*	7825	106.5	86	54	76	50.75	6	8	19.5	4

\* Dimensions for secondary voltage of 480 volts only. Consult factory for other voltages.

